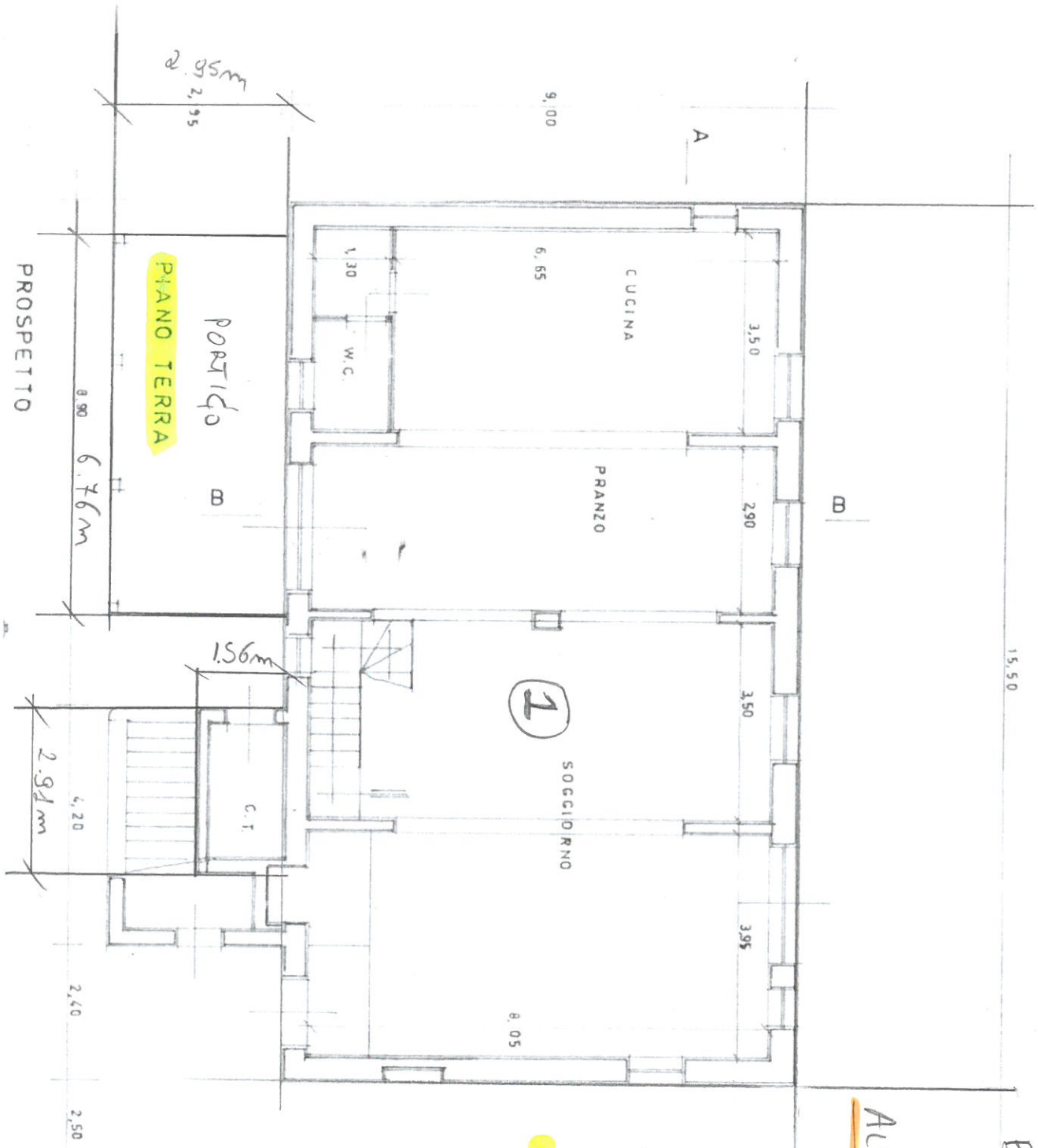


2



costi da volo \rightarrow 1.04

Blocko ① \rightarrow (15.50m x 9.00m)
 = 139.5 mq \approx 140mq

ALTRE SUPERFICI:

PORTICO
 (6.76m x 2.95m)
 A = 19.84mq
 \approx 20mq

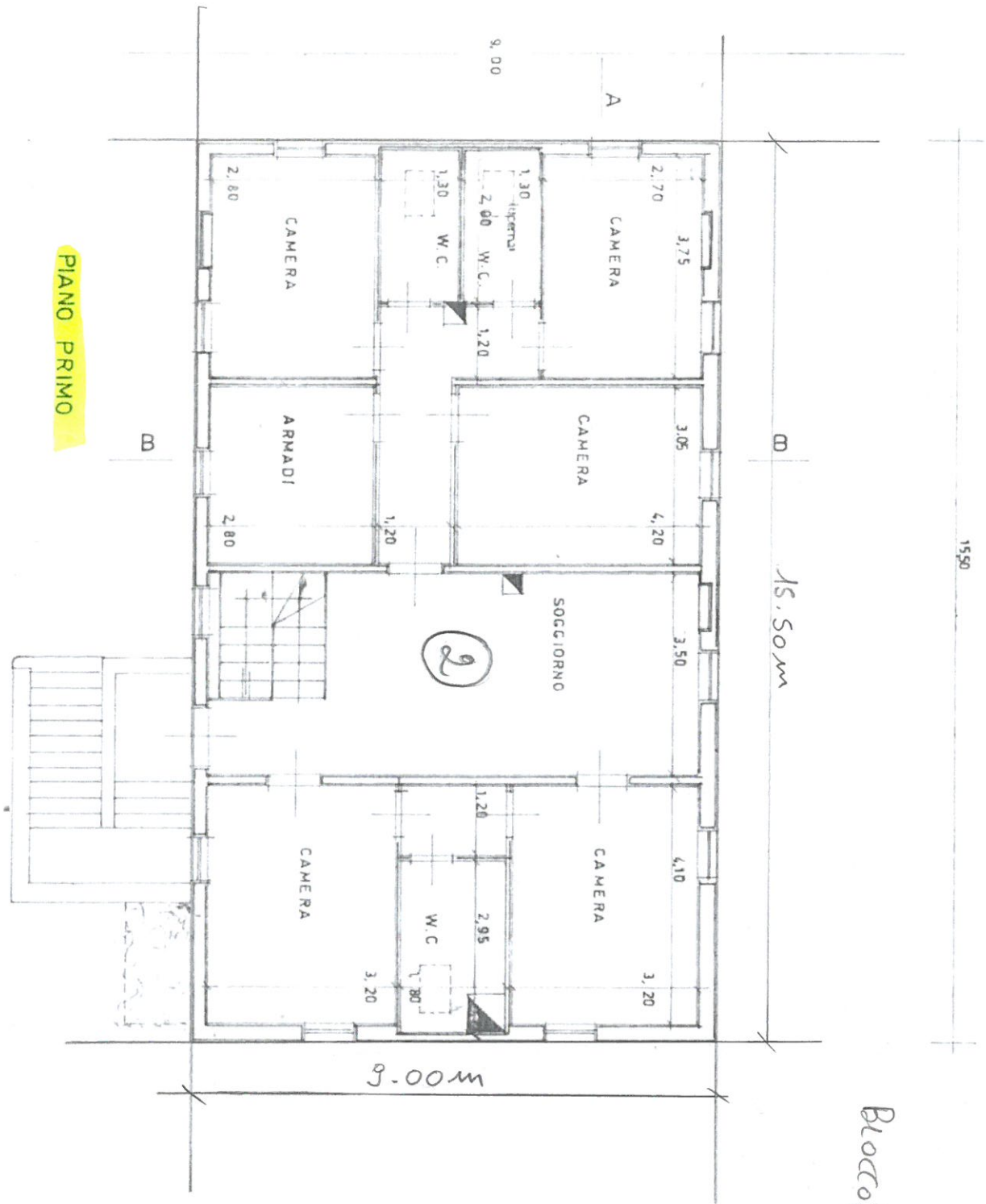
CENTRALE TERMICA
 (2.91m x 1.56m)
 = 4.53mq
 \approx 5mq

2.95

$$\text{coeff. di ricalo} \Rightarrow \frac{15.50 \text{ m}}{14.9 \text{ cm}} = 1.04$$

$$\text{Blocco } \textcircled{2} \Rightarrow (15.50 \text{ m} \times 9.00 \text{ m})$$

$$= 139.5 \text{ mq} \approx 140 \text{ mq}$$



PIANO PRIMO

RETRO